



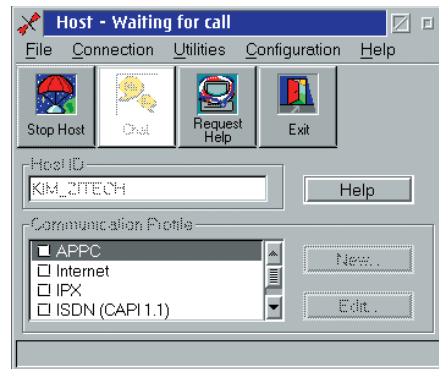
# NetOp for OS/2



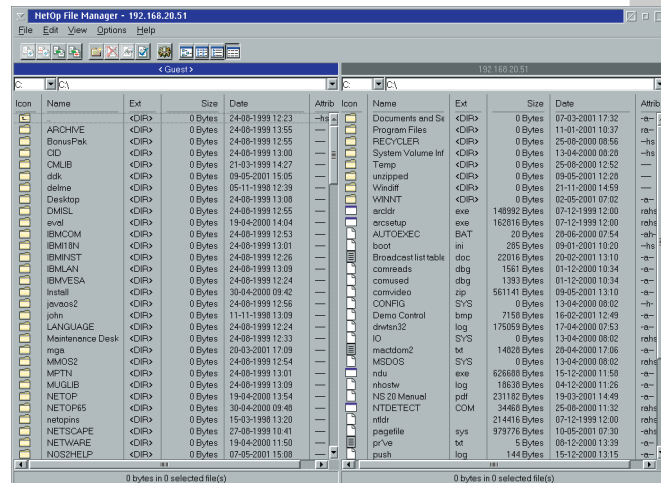
Moving expertise—not people®

## NetOp for OS/2

NetOp for OS/2 6.5 is the latest version of our cutting-edge remote-control software for OS/2-based computers. Totally compatible with virtually all Windows, OS/2 and DOS systems, NetOp for OS/2 lets you provide cross-platform remote support to multiple users. Built on the same award-winning technology as previous versions, NetOp for OS/2 6.5 has been upgraded with numerous new features to help you provide better network support via a user-friendly interface.



The NetOp for OS/2 Host module



The NetOp for OS/2 File Manager



## Key features of NetOp for OS/2 6.5

**OS/2 support:** Support features include the remote control of Presentation Manager, Workplace Shell, full screen/windowed OS/2 and DOS command prompts, full screen/windowed WIN-OS/2.

**Communication:** It is possible to gain remote access to other PCs via TCP/IP (TCP), TCP/IP (UDP), IPX, NetBIOS, APPC, serial/modem or ISDN (including channel bundling and short hold mode). The system relies on a non-polling communication engine – this means no traffic is sent across communication links except screen changes and/or mouse/keyboard information. Data is transmitted in a compressed format. This helps maintain high performance even across slow communication links.

**Graphics:** It is possible to remote control any graphics adapter supported by OS/2, regardless of resolution and colour depth.

**File Manager:** The program's advanced File Manager offers drag-and-drop file transfer functionality. This makes it extremely easy to select, move, clone, copy and synchronise individual files or entire directories. Additional features include progress meters, crash recovery, transfer history record, and much more.

**Request help:** Host users can request help by sending a message to a dedicated help service supported by one or more Guests. From the list of help requests, a Guest can select a specific Host and provide remote assistance. It is also possible for a Host to send a pre-defined help message to a specific Guest; the Host can also determine the time-out period for help messages.

**Chat:** This feature allows Guest and Host users to hold online, real-time text discussions.

**Security:** It is possible to choose between default and individual Guest access privileges, i.e., what Guests can and cannot do on Host PCs. Other security features include access confirmation, call back (roving or fixed number), password-protected configuration on Host modules, A-number check (ISDN only) and MAC/IP address check.

**Log:** It is possible to keep a record of chosen activities for both Guest and Host users either locally on PCs or on a special NetOp Name Server across the network.

**Centralised authentication (optional):** This feature forces Guest users to pass a verification process via the special NetOp Security Server before getting access to a Host PC. Guest IDs, passwords and access privileges for each Host are held centrally on the Security Server.

**Guest module:** This module supports an unlimited number of Host tables, and can automatically build tables of available Host PCs (IPX, NetBIOS or TCP/IP (UDP) networks). It is possible to run several simultaneous remote-control sessions. Other features include flexible command line switches, remote booting of Host PCs, optional colour and resolution reduction, print re-direction from Host to Guest PCs, optional inactivity time-out, blank Host screen for privacy, marker mode, and much more.

**Host module:** This module offers multiple communication profiles, flexible command line switches, hang up function to terminate sessions, request chat feature, file transfer status window, request help feature, and much more.

## Technical requirement

<b>Computer:</b>	IBM PS/PC or compatible.
<b>Video:</b>	Any graphics adapter supported by OS/2.
<b>Disk space:</b>	Less than 2MB for either Host or Guest.
<b>OS/2:</b>	Version 1.3 or higher, Warp 3.0 and 4.x.
<b>IPX:</b>	Novell NetWare requester for OS/2 or compatible.
<b>NetBIOS:</b>	IBM or compatible.
<b>TCP/IP:</b>	IBM TCP/2 and FTP PC/TCP for OS/2 or compatible.
<b>APPC:</b>	IBM Communication Manager/2 or compatible.
<b>Serial/modem:</b>	Null modem cable or modem supporting the AT command set.
<b>ISDN:</b>	CAPI 1.1 16 bit DLL or CAPI 2.0 32 bit DLL.

### NetOp product line

**NetOp for OS/2 6.5** for remote control of OS/2-based PCs. Modules include Guest, Host, Gateway, Access Security Server and Log Server. Version 6.5 modules are available individually or in combination packages of Guest/Host modules.

**NetOp Remote Control** for Windows-based PCs. Modules include Guest, Host, Gateway, Security Server and Name Server.

**NetOp for DOS** for remote control of DOS-based PCs. Modules include Guest and Host.

**NetOp School** is a teaching tool designed to enhance PC-based training by using remote-control technology.

Danware Data A/S  
Bregnerodvej 127  
DK-3460 Birkerød  
Tel: +45 45 90 25 25  
Fax: +45 45 90 25 26  
E-mail: info@netop.com  
Website: www.netop.com

Moving expertise—not people®

