

# NETOP™ ProtectOn™ PRO

## Endpoint Protection Software

Keep networked computers free from damage and running reliably with Netop ProtectOn Pro, the affordable endpoint protection software that combines robust hard disk protection with powerful remote management and comprehensive Internet, application and device controls. Ideal for schools, libraries and businesses, Netop ProtectOn Pro eliminates IT problems and saves countless hours of support time.

### Comprehensive endpoint protection

Rock-solid hard disk protection and control over system devices, application use and Internet access with fully integrated remote management capability.

### Trouble-free computing environment

Eliminates virus damage, accidental configuration problems, malicious software activity and unwanted downloads automatically.

### Enhanced security and control

Block or allow access to any systems device on any computer, control USB drives, ports and WiFi devices and hide sensitive files.

### Ensure appropriate computer use

Put a halt to games, chat, file-sharing, and inappropriate Web surfing with powerful Internet and application controls.

### Integrated remote management

Manage every computer on your network remotely with a central administrative console, consolidating essential tools in one intuitive interface.

### Affordably priced

Comprehensive solution for endpoint protection at or below the price most companies charge for hard disk protection alone.

#### BENEFITS

- Enjoy trouble-free computing
- Erase virus damage automatically
- Reverse unwanted downloads
- No more maintenance headaches
- Enhance security and control
- Eliminate threats from USB devices
- Protect confidential data
- Halt inappropriate computer use
- Enforce security policies 24/7
- Improve productivity and support
- Save money with a comprehensive solution

*The affordable new solution for hard disk protection and device control.*

## FEATURES

### Protect networked computers

Get all the benefits of superior hard disk protection, and much more. Eliminate computer damage and downtime, while protecting data and system security throughout your network.

### Erase virus damage

Automatically remove viruses and unwanted downloads. Restore computers to a known good state on reboot. Wipe out all changes, or set aside folders where user files are preserved.

### Restrict device access

Protect sensitive data and ensure system integrity. Grant or deny access to vulnerable system devices like hard disks, DVD/CD and floppy drives, parallel and serial ports, USB and WiFi devices.

### Remotely manage computers

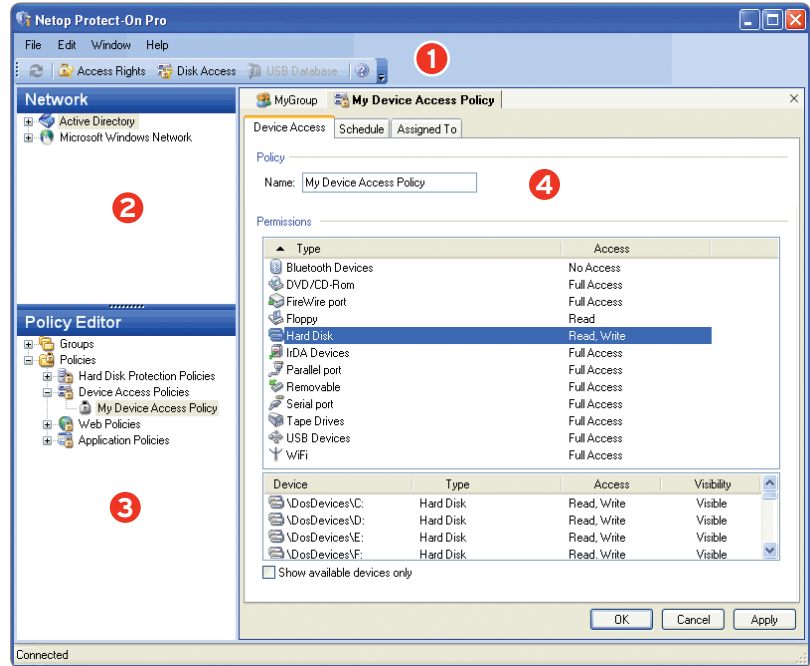
Wake up, shut-down or restart computers remotely. Check disk space, view event logs, access the Windows task manager, manage computer services, shared drives and more.

### Control application and Web use

Set and enforce policies for Internet access by computer, by user or by time period. Deny access to problem Web sites and applications, or limit access to those appropriate for school or business use.

### Protect sensitive data

Hide hard disk contents completely from certain users, or limit access to a selected list of folders. Ensure that confidential school or company data is only accessed by authorized users.

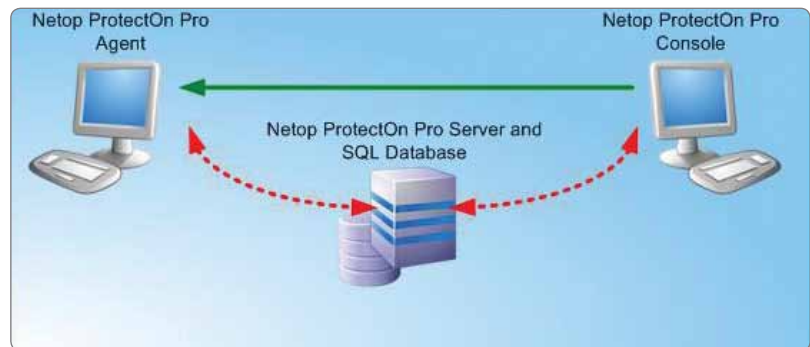


1. Menus and toolbar

2. Network pane

3. Policy editor

4. Data panel



## NETOP PROTECTON PRO REQUIREMENTS

### AGENT

Module that runs on client computers providing endpoint protection and administrator access.

- Runs on Windows 2008, 2003, 2000 (service pack 4), Vista or XP (service pack 2).
- Also runs on Windows Server 2008, 2003 Standard, Web Edition, Enterprise Edition, Windows 2000 Server and Advanced Server, Windows 2000 Professional (service pack 4).
- 64-bit editions are supported without Web and application access controls.
- NT4 is supported, but without device access control.

### CONSOLE

Administrative console used to determine protection policies and manage client computers.

- Requires Microsoft .NET Framework 2.0.
- Runs on Windows 2008, 2003, 2000 (service pack 4), Vista or XP (service pack 2).
- Also runs on Windows Server 2008, 2003 Standard, Web Edition, Enterprise Edition, Windows 2000 Server and Advanced Server, Windows 2000 Professional (service pack 4).

### SERVER

Central database that stores protection policy information.

- Requires Microsoft SQL Server. Comes with SQL Compact Edition for testing and basic use. Larger installations may prefer to use one of the following: SQL 2008 including Express, SQL 2005 including Express, SQL 2000 including MSDE 2000.
- Requires Microsoft .NET Framework 2.0.
- Runs on Windows Server 2008, 2003 Standard, Web Edition, Enterprise Edition, Windows 2000 Server and Advanced Server, Windows 2000 Professional (service pack 4). Windows Server 2000/2003.
- Also runs on Windows 2008, 2003, 2000 (service pack 4), Vista or XP (service pack 2).



[www.netop.com](http://www.netop.com)